

Kiierr



Kiierr Family Of Devices User's Manual

Kiierr Family Of Devices User Manual

By Kiierr International LLC

The Kiierr Family Of Devices (272 Premier & 148 Pro) User Manual, Sample Brochure and photo of the packaging contents are contained in this manual.

Table of Contents:

Indications for Use-----	4
The Product-----	5
What's Inside The Box-----	5
What To Expect -----	5
Instructions For Use -----	6
How To Use -----	7
During Treatment -----	8
Contraindications -----	9
Risks and Benefits -----	9
Warnings and Precautions -----	9
Cleaning Instructions -----	11
Maintaining Your Device -----	12
Storing Your Device -----	12
Disposal Instructions -----	12
Life Expectancy -----	12
Troubleshooting Guide -----	13
Warranty -----	14
Adverse Events -----	14
Safety Label -----	14
Manufacturer's EMC Statement -----	15
Specifications -----	19
How to Get Help -----	19
Kierr Laser Hair Growth Cap Components -----	20
Kierr Logo -----	21
Kierr 148 Pro & Kierr 272 Premier Box -----	23
Bar Codes -----	26

Informational Guide

It is required to read the entire user's manual before usage.



Indications for Use

The Kiierr 272 Premier & 148 Pro Laser Hair Growth Caps are indicated to promote hair growth in females with androgenetic Alopecia who have Ludwig-Savin Classifications of I-II, in males with androgenetic Alopecia who have Norwood-Hamilton Classifications of Ila-V and for both, Fitzpatrick Classification of Skin Phototypes I to IV.

Norwood Hamilton Classifications of Male Pattern Baldness

	Approved
	Not Approved

Ludwig Classifications of Female Pattern Baldness

	Approved
	Not Approved

Fitzpatrick Classification of Skin Types

Skin type	Type 1	Type 2	Type 3	Type 4	Type 5	Type 6
Skin color	Pale, white skin	White Skin	White skin	Light brown or olive skin	Brown skin	Dark brown or black skin
Reaction to Sun Exposure	Always burns, never tans	Burns easily, tans minimally	Burns minimally, tans easily	Burns minimally, tans easily	Rarely burns, tans easily and darkly	Rarely burns, always tans, deeply pigmented
	Approved				Not Approved	

The Product

Kierr 272 Premier & 148 Pro laser Hair Growth Caps consists of red light laser diodes that are spread throughout the cap. The product uses laser diodes to thoroughly cover the entire scalp area which is normally covered with hair. This product design allows for maximum laser light coverage without manual movement. This product will have an audible tone to indicate the treatment time has been accomplished and the lights will automatically turn off.

What's Inside The Box

- **Laser Device (1)**
- **Ball Hat (1)**
- **User Manual (1)**
- **Wall Charger Plug (1)**
- **USB Cord (2)**
- **Portable Power Pack (1)**



What To Expect

Kierr 272 Premier & 148 Pro Laser Hair Growth Caps are recommended for men and women experiencing mild or moderate hair loss on the scale. Before first using the product, remove all components from the packaging. Plug the wall plug into one USB cord and attach to the portable power pack until fully charged.

After fully charging the portable power pack, remove the USB cord from the wall charger and plug directly in to the laser cap. Make sure the USB is connected well to the laser cap. Do not push the USB too hard in case it is inserted backwards.

After the portable power pack is connected securely to the laser cap, press the power button. The battery blue indicator light will turn on and the laser cap will start working. After the 30-minute recommended treatment the laser cap will automatically turn off on its own.

As you use the Kierr 272 Premier & 148 Pro Laser Hair Growth Caps sit comfortably in an upright position (in a chair, on the couch or even upright in bed).

Recommended Treatments

The Kiierr 272 Premier & 148 Pro Hair Growth Laser Cap is designed to be used for 30 minutes, every other day, on non-consecutive days for 16 weeks. Do not worry if you miss a treatment day, simply keep going and add an extra day of treatment for each day you miss on top of the 16 weeks

When You Should Notice Improvements

Users typically start to see improvements in hair density within 4-6 months of recommended use. After the initial recommended 16 weeks you can use the device as often as needed to maintain/improve new hair growth.

Instructions for Intended Use

The Kiierr 272 Premier & 148 Pro Laser Cap is made to use on the human scalp only. Using this device on any other part of the body is not advised.

Do not point or shine the Kiierr 272 Premier & 148 Pro Laser Cap lights at others, pets, etc.

The Kiierr 272 Premier & 148 Pro Laser Cap should only be used as directed in this manual. Carefully read all instructions and warnings prior to using this device.

If the Kiierr 272 Premier & 148 Pro Laser Cap is not working properly, please stop use immediately and contact Kiierr customer support at **1-800-231-9191** or email **support@kiierr.com** to service or replace your device.



Warning: Do not attempt to adjust or modify the Kiierr 272 & 148 Pro Premier Laser Cap in any way. Use of this device in any way other than those specifically mentioned in this manual can result in injury.



Laser Exposure to users: There are no harmful effects to the user in the use of the Kiierr 272 & 148 Pro Laser Cap device.

How Often To Use Kiierr 272 & 148 Pro Laser Cap

We advise using this device for 30 minutes, every other day, on non-consecutive days for 16 weeks.

We do not recommend using this device on consecutive days or multiple times per day.

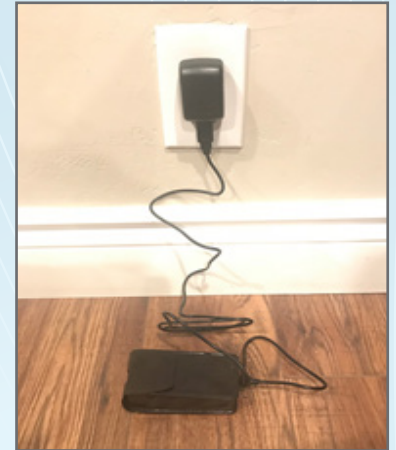
The Kiierr 272 Premier & 148 Pro Laser Cap has a set timer of 30 minutes for each recommended session. The device will shut off automatically after the 30-minute period has been reached. If you exceed the recommended time it will not impact the results of the Kiierr 272 Premier & 148 Pro Laser Cap.

How To Use

BEFORE OPERATING PLEASE NOTE THE FOLLOWING: THE KIIERR 272 & 148 PRO LASER CAP SHOULD NEVER BE CONNECTED DIRECTLY TO THE WALL CHARGER. THE CAP SHOULD ONLY BE POWERED BY THE BATTERY PACK. THE BATTERY SHOULD BE CHARGED USING THE INCLUDED CHARGING ADAPTER.

STEP 1

Remove all components from the packaging. Plug the wall plug into one USB cord and attach to the portable power pack until fully charged.



STEP 2

Place the laser cap inside the black hat provided in your box. Or you may place the laser cap inside any standard size ball hat of your choosing.

STEP 3

After fully charging the portable power pack, remove the USB cord from the wall charger and plug directly in to the laser cap. Make sure the USB is connected well to the laser cap. Do not push the USB too hard in case it is inserted backwards.



STEP 4

After the portable power pack is connected securely to the laser cap, place the laser cap on top of your head with the connected wire located in the back of your head. The wire should be hanging vertically down your spine.

STEP 5

Next you will locate the power button located on the upper left side of your power pack underneath the leather strap. You will then press the power button. The battery blue indicator light will turn on and the laser cap will start working. After the 30-minute recommended treatment the laser cap will automatically turn off on its own.



STEP 6

As you use the Kiierr 272 Premier & 148 Pro Laser Hair Growth Cap, sit comfortably in an upright position (in a chair, on the couch or even upright in bed).



During Treatment

When used as instructed, the red lights in the laser cap will blink on and off for 30 minutes.

***DO NOT LOOK DIRECTLY** at the red laser lights while they are on as this may cause injury.*

If for some reason the lights in your device fail to turn on after using the recommended steps above, please contact Kiierr International customer support to service or replace your unit.

STEP 7

After the 30-minute recommended treatment time is met the laser cap will automatically turn off so you know when your treatment is finished. Then simply unplug the power cord from the laser cap and return the device (and all components) back to the box for safe keeping and resume use at your next treatment day.

***Note:** If you stop using your Kiierr 272 Premier & 148 Pro Laser Hair Growth Cap, the noticed improvements to hair density can decrease over time.*

Contraindications

Kierr 272 Premier & 148 Pro Laser Hair Growth Cap IS NOT to be used by children under the age of 18 years.

DO NOT use the Kierr 272 Premier & 148 Pro Laser Hair Growth Cap if you are currently taking any medications which makes you sensitive to sunlight to bright light in general. DO NOT use this device if you have any condition which makes you sensitive to light.

DO NOT use this product if you have sensitive skin or if you have experienced any previous or have history of SENSITIVITY TO THIS SPECIFIC WAVE-LENGTH OF LIGHT (650nm)



DO NOT use the Kierr 272 Premier & 148 Pro Laser Hair Growth Cap if you have any cancer on your scalp.

Risks and Benefits

Low Level Laser Therapy as used in the Kierr 272 Premier & 148 Pro Laser Hair Growth Cap has been designated NSR (Non-Significant Risk) by most of the world wide regulatory bodies. Please read the Warnings and Precautions section below as well as additional risks.

Warnings and Precautions

TO REDUCE THE RISK OF ELECTRICAL SHOCK, THAT MAY RESULT IN INJURY OR DEATH:



WARNING: DO NOT OPERATE THE KIIERR 272 PREMIER & 148 PRO LASER HAIR GROWTH CAP IN CLOSE PROXIMITY TO ANYTHING MARKET WITH THE ABOVE LOGO FOR ELECTRO MAGNETIC FREQUENCY (I.E. CELLULAR TOWER)



WARNING: DO NOT place or store the laser cap where it can fall or be pulled into a bath tub, sink or any other water.





WARNING: If the device accidentally falls into water or any other liquid, immediately unplug it from the electrical outlet if plugged in. DO NOT TOUCH OR GET NEAR TO THE WATER WHILE THE DEVICE IS CONNECTED TO ANY POWER SOURCE.



WARNING: Avoid getting the Kiierr 272 Premier & 148 Pro Laser Hair Growth Cap wet, as this may cause electrical shock.



WARNING: Never use the laser cap when your hair is wet.



WARNING: DO NOT put significant stress on the power cord when untangling or straightening as this could cause a break in the cord and produce electrical hazard.



WARNING: Always connect the charged power pack to the power cord first, then plug into the outlet to charge.



WARNING: NEVER plug the actual laser cap with laser diodes directly into the wall outlet. Only plug the power pack into the wall outlet.



WARNING: Only use the power cords provided by Kiierr International.



WARNING: NEVER operate the Kiierr 272 Premier & 148 Pro Laser Hair Growth Cap if it has a damaged power cord, power pack or laser cap. If the device is damaged in any way please contact Kiierr International customer service to discuss service or replacement.



WARNING: Please keep the power cord, power pack and laser cap away from hot surfaces. Any contact with hot surfaces can cause these components to malfunction and could produce electrical shock.



WARNING: Only use the Kiierr 272 Premier & 148 Pro Laser Hair Growth Cap according to the user guide that has been provided. We do not recommend any other use.



WARNING: DO NOT look or stare directly at the laser light or it's reflection off a mirrored surface. This could cause injury.



WARNING: DO NOT use the laser cap as a head protection device for any reason whatsoever.



WARNING: Please keep the laser cap away from pets and children under the age of 18.



WARNING: VIEWING THE LASER LIGHT OUTPUT VIA CERTAIN INSTRUMENTS (FOR EXAMPLE: MAGNIFICATION INSTRUMENTS, MICROSCOPES, EYE LOUPES, MAGNIFYING READING GLASSES ETC.) WITHIN THE DISTANCE OF 100MM MAY CAUSE INJURY TO YOUR EYES.



Cleaning Instructions



WARNING: ALWAYS DISCONNECT THE LASER CAP FROM ANY CORD OR POWER SOURCE BEFORE ATTEMPTING TO CLEAN IT IN ANY WAY.

Before cleaning your device, please ensure it is completely turned off and unplugged from any power source.

Instructions

Clean the inside of the laser cap (the side where the laser diodes are) with a soft, dry cloth. If further cleaning is needed, lightly dampen the cloth with warm water.

DO NOT use Acetone or any other cleaning chemicals on the device. Acetone and other cleaning agents will damage the device and its laser diodes, thus causing the warranty to be voided.

DO NOT apply excessive force while cleaning as this can damage the laser diodes inside the device. Extra care MUST be used when cleaning the part of the device where the laser diodes reside.

Maintaining Your Device

The Kiierr 272 Premier & 148 Pro Laser Hair Growth Cap is designed to operate for many years when cared for properly using recommended methods. If you must clean the device, please see recommended instructions above.

IMPORTANT: DO NOT attempt to repair or service your device yourself. Please contact Kiierr International customer service to discuss repairing or replacing your device.

Storing Your Device

Store your Kiierr 272 Premier & 148 Pro Laser Hair Growth Cap in a dry place with a consistent temperature between 10 to 50 degrees Celsius (50-85 degrees Fahrenheit). This device is not meant to be stored in an area with a maximum humidity higher than 80%. Keep your device out of direct sunlight and away from hot surfaces or devices which emit heat of any kind. The Kiierr 272 Premier & 148 Pro Laser Hair Growth Cap cannot be stored in close proximity to chemicals of any kind.

Disposing of your Device

It is important for your Kiierr 272 Premier & 148 Pro Laser Hair Growth Cap device to be recycled. Please check with your government agency for their protocols for properly disposing of electronic devices before doing so.

Life Expectancy

The life expectancy of the Kiierr 272 Premier & 148 Pro Laser Hair Growth Cap is based on independent testing done via the IEC 60068 International Standard. The Kiierr 272 Premier & 148 Pro Laser Hair Growth Cap uses high quality laser diodes that are rated to exceed 10,000 hours of recommended usage. Based on independent testing and the rating of the laser diodes, the life expectancy of the Kiierr 272 Premier & 148 Pro Laser Hair Growth Cap is 5 years of recommended use. The Kiierr 272 Premier & 148 Pro Laser Hair Growth Cap is a non-serviceable device. It is recommended that you read this entire instructional guide thoroughly before attempting to operate the Kiierr 272 Premier & 148 Pro Laser Hair Growth Cap.

Troubleshooting Guide

Please use the troubleshooting scenarios below before contacting Kiierr International customer service to service or replace your device. If you are still experiencing issues after utilizing this guide, please contact Kiierr International customer service.

Question: *My laser cap will not turn on*

Answer:

- Re-insert the power cord into the laser cap. Press the ON/OFF switch.
- Plug the power pack into a different electrical outlet and attempt to charge. Then try again to use the device.
- When charging the power pack make sure it is firmly plugged into the wall.
- Unplug and re-plug all connected components.
- Plug in a different standard household device (such as a cell phone) to the wall outlet you were using to ensure the wall outlet is putting out power properly.

Question: *My laser cap is turning on, but the laser is not visible*

Answer:

- Ensure the power pack has a proper full charge, then disconnect and reconnect the power cord from the device and try again to turn on.

Question: *My laser cap will not turn off*

Answer:

- Unplug the laser cap from the power pack.

Question: *My laser cap is turning off during use*

Answer:

- Your laser cap is programmed to automatically turn off after the recommended 30 minutes of use. Please ensure you did not mis-track time and it has been 30 minutes.
- Re-insert the power cord into the laser cap. Press the POWER button.
- Use a different electrical outlet to attempt to fully charge your power pack.
- Unplug and re-plug all connections/cords. Try to turn back on and use the device.

If you are still experiencing issues with your Kiierr 272 Premier & 148 Pro Laser Hair Growth Cap after using this troubleshooting guide, please contact Kiierr International customer service to service or replace your device.

Kiierr International, LLC
863 East Downington Ave.
Salt Lake City, Utah 84105
service@kiierr.com
www.kiierr.com

Warranty

To obtain warranty service, please complete the below steps:

1. Contact Kiierr International customer support to receive an RMA number. Call or email Kiierr International customer support describing the issue your device is having and provide the units serial number, your return shipping address and an email address/phone number.

Phone: 435-840-8199

Email: service@kiierr.com

2. Once you have submitted your RMA request, Kiierr International will issue you a prepaid return shipping label with an RMA number and instructions to ship the unit back to us to be serviced or replaced. You **MUST** include the RMA number on the outside of the package. If you do not include your RMA number on your package it can cause your return or service process to be delayed.

Our return address is:

**Kiierr International, LLC
863 East Downington Ave.
Salt Lake City, Utah 84105**

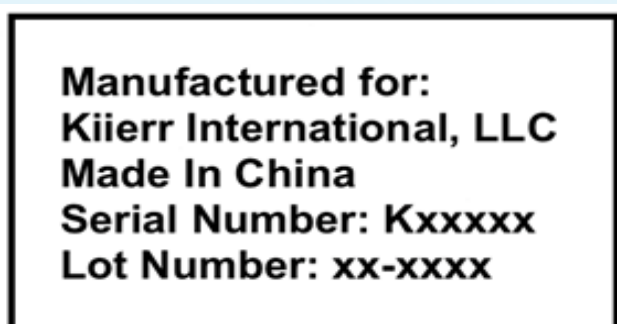
Adverse Effects

If you experience any adverse effects that result in a serious injury or an event of death, immediately remove the laser cap from its power source, call your local emergency line and contact Kiierr International's Client Care Specialists at 1-435-840-8199 or service@kiierr.com

Safety Label

You can find the safety label pictured below on the front of inner canopy of helmet.

The Kiierr 272 Premier & 148 Pro Laser Hair Growth Cap complies with IEC 60825 – 1 Ed. 2 (2007) standards. The lasers of the Kiierr 272 Premier & 148 Pro Laser Hair Growth Cap are classified as "Class 3R" and are deemed safe for medical use.



Manufacturer's EMC Statement


Guidance and manufacturer's declaration – electromagnetic emission – for all EQUIPMENT AND SYSTEMS

1	Guidance and manufacturer's declaration – electromagnetic emission		
2	The COSMO-030, COSMO-020 and COSMO-010 Diode Laser Cap are intended for use in the electromagnetic environment specified below. The customer or the user of COSMO-030, COSMO-020 and COSMO-010 Diode Laser Cap should assure that it is used in such an environment.		
3	Emissions test	Compliance	Electromagnetic environment - guidance
4	RF emissions CISPR 11	Group 1	The COSMO-030, COSMO-020 and COSMO-010 Diode Laser Cap use RF energy only for its internal function. Therefore, its RF emissions are very low and are not likely to cause any interference in nearby electronic equipment.
5	RF emissions CISPR 11	Class B	
6	Harmonic emissions IEC 61000-3-2	Class A	
7	Voltage fluctuations / flicker emissions IEC 61000-3-3	Complies	The COSMO-030, COSMO-020 and COSMO-010 Diode Laser Cap suitable for use in all establishments, including domestic establishments and those directly connected to the public low-voltage power supply network that supplies buildings used for domestic purposes.

**Guidance and manufacturer's declaration – electromagnetic immunity –
for all EQUIPMENT and SYSTEMS**

Guidance and manufacturer's declaration – electromagnetic immunity			
The COSMO-030, COSMO-020 and COSMO-010 Diode Laser Cap are intended for use in the electromagnetic environment specified below. The customer or the user of the COSMO-030, COSMO-020 and COSMO-010 Diode Laser Cap should assure that it is used in such an environment.			
Immunity test	IEC 60601 test level	Compliance level	Electromagnetic environment - guidance
Electrostatic discharge (ESD) IEC 61000-4-2	± 8 kV contact ± 15 kV air	± 8 kV contact ± 15 kV air	Floors should be wood, concrete or ceramic tile. If floors are covered with synthetic material, the relative humidity should be at least 30 %.
Electrostatic transient / burst IEC 61000-4-4	± 2 kV for power supply lines ± 1 kV for input/output lines	± 2 kV for power supply lines	Mains power quality should be that of a typical commercial or hospital environment.
Surge IEC 61000-4-5	± 1 kV differential mode ± 2 kV common mode	± 1 kV differential mode ± 2 kV common mode	Mains power quality should be that of a typical commercial or hospital environment.
Voltage dips, short interruptions and voltage variations on power supply input lines IEC 61000-4-11	0 % UT; 0,5 cycle g) At 0°, 45°, 90°, 135°, 180°, 225°, 270° and 315° 0 % UT; 1 cycle and 70 % UT; 25/30 cycles Single phase: at 0° 0 % UT; 250/300 cycle	0 % UT; 0,5 cycle g) At 0°, 45°, 90°, 135°, 180°, 225°, 270° and 315° 0 % UT; 1 cycle and 70 % UT; 25/30 cycles Single phase: at 0° 0 % UT; 250/300 cycle	Mains power quality should be that of a typical commercial or hospital environment. If the user of the COSMO-030, COSMO-020 and COSMO-010 Diode Laser Cap requires continued operation during power mains interruptions, it is recommended that the COSMO-030, COSMO-020 and COSMO-010 Diode Laser Cap be powered from an uninterruptible power supply or a battery.
Power frequency (50/60 Hz) magnetic field IEC 61000-4-8	30 A/m	30 A/m	Power frequency magnetic fields should be at levels characteristic of a typical location in a typical commercial or hospital environment.
NOTE U_T is the a. c. mains voltage prior to application of the test level.			

**Guidance and manufacturer's declaration – electromagnetic immunity –
for EQUIPMENT and SYSTEM that are not LIFE-SUPPORTING**

Guidance and manufacturer's declaration – electromagnetic immunity			
The COSMO-030, COSMO-020 and COSMO-010 Diode Laser Cap are intended for use in the electromagnetic environment specified below. The customer or the user of the COSMO-030, COSMO-020 and COSMO-010 Diode Laser Cap should assure that it is used in such an environment.			
Immunity test	IEC 60601 test level	Compliance level	Electromagnetic environment - guidance
Conducted RF IEC 61000-4-6	3 Vrms 150 kHz to 80 MHz 6 V in ISM and amateur radio bands between 0,15 MHz and 80 MHz	3V 6V	Portable and mobile RF communications equipment should be used no closer to any part of the COSMO-030, COSMO-020 and COSMO-010 Diode Laser Cap, including cables, than the recommended separation distance calculated from the equation applicable to the frequency of the transmitter. Recommended separation distance $d = \left[\frac{3.5}{f_1} \right] \sqrt{P}$ $d = \left[\frac{12}{f_2} \right] \sqrt{P}$
Radiated RF IEC 61000-4-3	10 V/m 80 MHz to 2.7 GHz	10 V/m	$d = \left[\frac{3.5}{E_1} \right] \sqrt{P} \quad 80 \text{ MHz to } 800 \text{ MHz}$ $d = \left[\frac{7}{E_1} \right] \sqrt{P} \quad 800 \text{ MHz to } 2.7 \text{ GHz}$ <p>where p is the maximum output power rating of the transmitter in watts (W) according to the transmitter manufacturer and d is the recommended separation distance in metres (m).^b</p> <p>Field strengths from fixed RF transmitters, as determined by an electromagnetic site survey,^a should be less than the compliance level in each frequency range.^b</p> <p>Interference may occur in the vicinity of equipment marked with the following symbol:</p> 
NOTE 1 At 80 MHz and 800 MHz, the higher frequency range applies.			
NOTE 2 These guidelines may not apply in all situations. Electromagnetic is affected by absorption and reflection from structures, objects and people.			
^a The ISM (industrial, scientific and medical) bands between 150 kHz and 80 MHz are 6,765 MHz to 6,795 MHz; 13,553 MHz to 13,567 MHz; 26,957 MHz to 27,283 MHz; and 40,66 MHz to 40,70 MHz. The amateur radio bands between 0,15 MHz and 80 MHz are 1,8 MHz to 2,0 MHz, 3,5 MHz to 4,0 MHz, 5,3 MHz to 5,4 MHz, 7 MHz to 7,3 MHz, 10,1 MHz to 10,15 MHz, 14 MHz to 14,2 MHz, 18,07 MHz to 18,17 MHz, 21,0 MHz to 21,4 MHz, 24,89 MHz to 24,99 MHz, 28,0 MHz to 29,7 MHz and 50,0 MHz to 54,0 MHz. ^b Field strengths from fixed transmitters, such as base stations for radio (cellular/cordless) telephones and land mobile radios, amateur radio, AM and FM radio broadcast and TV broadcast cannot be predicted theoretically with accuracy. To assess the electromagnetic environment due to fixed RF transmitters, an electromagnetic site survey should be considered. If the measured field strength in the location in which the COSMO-030, COSMO-020 and COSMO-010 Diode Laser Cap is used exceeds the applicable RF compliance level above, the COSMO-030, COSMO-020 and COSMO-010 Diode Laser Cap should be observed to verify normal operation. If abnormal performance is observed, additional measures may be necessary, such as reorienting or relocating the COSMO-030, COSMO-020 and COSMO-010 Diode Laser Cap. ^c Over the frequency range 150 kHz to 80 MHz, field strengths should be less than 3V/m.			

Recommended separation distances between portable and mobile RF communications equipment and the EQUIPMENT or SYSTEM - for EQUIPMENT and SYSTEMS that are not LIFE-SUPPORTING

Recommended separation distances between portable and mobile RF communications equipment and the COSMO-030, COSMO-020 and COSMO-010 Diode Laser Cap				
The COSMO-030, COSMO-020 and COSMO-010 Diode Laser Cap are intended for use in an electromagnetic environment in which radiated RF disturbances are controlled. The customer or the user of the COSMO-030, COSMO-020 and COSMO-010 Diode Laser Cap can help prevent electromagnetic interference by maintaining a minimum distance between portable and mobile RF communications equipment (transmitters) and the COSMO-030, COSMO-020 and COSMO-010 Diode Laser Cap as recommended below, according to the maximum output power of the communications equipment				
Rated maximum output of transmitter W	Separation distance according to frequency of transmitter m			
	150 kHz to 80 MHz outside ISM and amateur radio bands $d = [\frac{3.5}{V_1}] \sqrt{P}$	150 kHz to 80 MHz in ISM and amateur radio bands $d = [\frac{12}{V_2}] \sqrt{P}$	80 MHz to 800 MHz $d = [\frac{3.5}{E_1}] \sqrt{P}$	800 MHz to 2.7 GHz $d = [\frac{7}{E_1}] \sqrt{P}$
0.01	0.12	0.20	0.035	0.07
0.1	0.38	0.63	0.11	0.22
1	1.2	2.00	0.35	0.70
10	3.8	6.32	1.10	2.21
100	12	20.00	35	70
For transmitters rated at a maximum output power not listed above the recommended separation distance d in metres (m) can be estimated using the equation applicable to the frequency of the transmitter, where P is the maximum output power rating of the transmitter in watts (W) according to the transmitter manufacturer.				
NOTE 1 At 80 MHz and 800 MHz, the separation distance for the higher frequency range applies.				
NOTE 2 These guidelines may not apply in all situations. Electromagnetic propagation is affected by absorption and reflection from structures, objects and people.				

Specifications

Power Supply

Output from the transformer: 5V

The power supply for the Kiierr 272 Premier & 148 Pro Laser Hair Growth Cap has been engineered for use in both the United States and International Countries. The power supply can adapt to 110 Volt/60 cycles (US) or volt/50 cycles. If the power outlets in your country use plugs different than the type supplied with the Kiierr 272 Premier & 148 Pro Laser Hair Growth Cap, you will need to acquire the proper plug adapter that is specific to your local country/region (not supplied with this device).

Device Specifications

Kiierr 272 Premier & 148 Pro Laser Hair Growth Cap Device

- Dimensions: 9" x 7" x 5"
- Weight: 1 lbs

How to Get Help

If the sensors in your Kiierr 272 Premier & 148 Pro Laser Hair Growth Cap are not functioning properly, please discontinue using your device and contact a Kiierr International customer support at 1-435-840-8199 or service@kiierr.com to service or replace your device.

NOTICE: DO NOT attempt to repair or service your device yourself. Please contact Kiierr International customer service at 1-435-840-8199 or service@kiierr.com to discuss repairing or replacing your device.

Kiierr Laser Hair Growth Cap Components

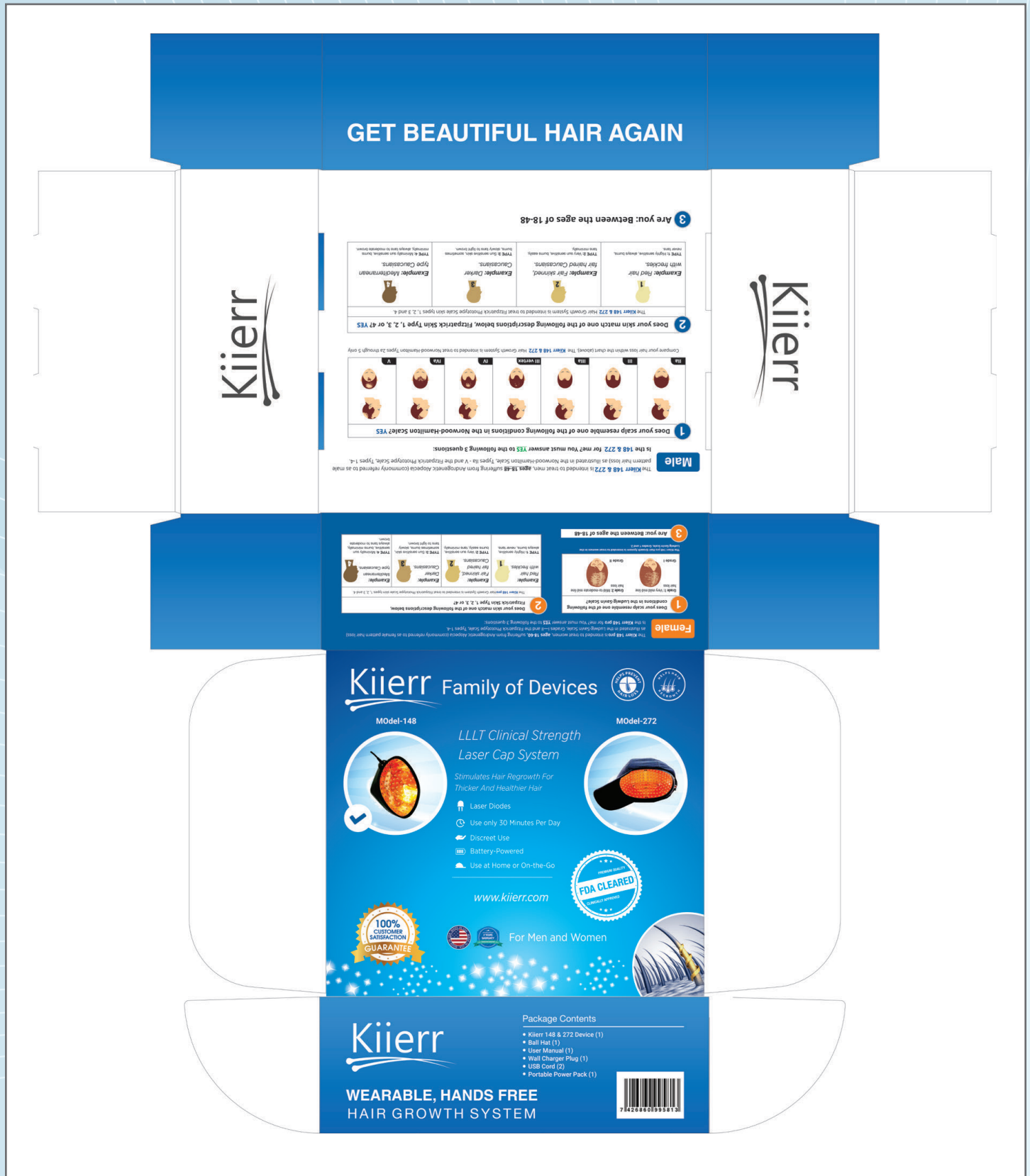


SUFFERING FROM COMMON HAIR LOSS, THINNING OR SHEDDING?

Kiierr 272 Premier & 148 Pro Laser Growth Cap can help! If you are experiencing androgenetic Alopecia you can treat it with our premier, easy to use portable laser cap.



Kierr 148 Pro & Kierr 272 Premier Box



Kiierr 148 Pro & Kiierr 272 Premier Box - Top

Kiierr Family of Devices






Model-148



LLLT Clinical Strength Laser Cap System

*Stimulates Hair Regrowth For
Thicker And Healthier Hair*

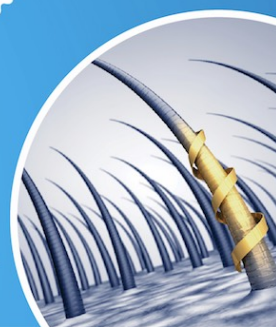
-  Laser Diodes
-  Use only 30 Minutes Per Day
-  Discreet Use
-  Battery-Powered
-  Use at Home or On-the-Go

www.kiierr.com

Model-272



For Men and Women










Male

The **Kiierr 148 & 272** is intended to treat men, **ages 18-48** suffering from Androgenetic Alopecia (commonly referred to as male pattern hair loss) as illustrated in the Norwood-Hamilton Scale, Types IIa - V and the Fitzpatrick Phototype Scale, Types 1-4.

Is the **148 & 272** for me? You must answer **YES** to the following 3 questions:

1

Does your scalp resemble one of the following conditions in the Norwood-Hamilton Scale? **YES**





 IIa	 III	 IIIa	 III vertex	 IV	 IVa	 V
--	--	---	---	---	--	--

Compare your hair loss within the chart (above). The **Kiierr 148 & 272** Hair Growth System is intended to treat Norwood-Hamilton Types 2a through 5 only

2

Does your skin match one of the following descriptions below, Fitzpatrick Skin Type 1, 2, 3, or 4? **YES**

The **Kiierr 148 & 272** Hair Growth System is intended to treat Fitzpatrick Phototype Scale skin types 1, 2, 3 and 4.

 Example: Red hair with freckles. TYPE 1: Highly sensitive, always burns, never tans.	 Example: Fair skinned, fair haired Caucasians. TYPE 2: Very sun sensitive, burns easily, tans minimally.	 Example: Darker Caucasians. TYPE 3: Sun sensitive skin, sometimes burns, slowly tans to light brown.	 Example: Mediterranean type Caucasians. TYPE 4: Minimally sun sensitive, burns minimally, always tans to moderate brown.
---	---	---	---

3 Are you: Between the ages of 18-48

Kiierr 148 Pro & Kiierr 272 Premier Box - Sides



WEARABLE, HANDS FREE HAIR GROWTH SYSTEM

Package Contents

- Kiierr 148 & 272 Device (1)
- Ball Hat (1)
- User Manual (1)
- Wall Charger Plug (1)
- USB Cord (2)
- Portable Power Pack (1)



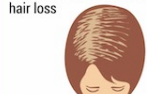
Female

The **Kiierr 148 pro** is intended to treat women, **ages 18-60**, suffering from Androgenetic Alopecia (commonly referred to as female pattern hair loss) as illustrated in the Ludwig-Savin Scale, Grades I—II and the Fitzpatrick Phototype Scale, Types 1-4.
Is the **Kiierr 148 pro** for me? You must answer **YES** to the following 3 questions:

1

Does your scalp resemble one of the following conditions in the Ludwig-Savin Scale?

Grade 1: Very mild mid-line hair loss



Grade I

Grade 2: Mild-to-moderate mid-line hair loss



Grade II

The Kiierr 148 pro Hair Growth System is intended to treat women in the Ludwig-Savin Scale, Grades 1 and 2.

3

Are you: Between the ages of 18-48

2

Does your skin match one of the following descriptions below, Fitzpatrick Skin Type 1, 2, 3, or 4?

The Kiierr 148 pro Hair Growth System is intended to treat Fitzpatrick Phototype Scale skin types 1, 2, 3 and 4.

Example:

Red hair with freckles.



1

Example:

Fair skinned, fair haired Caucasians.



2

Example:

Darker Caucasians.



3

Example:

Mediterranean type Caucasians.



4

TYPE 1: Highly sensitive, always burns, never tans.

TYPE 2: Very sun sensitive, burns easily, tans minimally.

TYPE 3: Sun sensitive skin, sometimes burns, slowly tans to light brown.

TYPE 4: Minimally sun sensitive, burns minimally, always tans to moderate brown.

GET BEAUTIFUL HAIR AGAIN



Bar Codes

272 PREMIER



148 PRO

